

*Future-ready Leaders with the Heart for Others*

# **PARENT-TEACHER MEETING 1**

**Primary 4**  
**30 January 2026**



3

**School's Focus and  
Key Outcomes**

4

**Programmes  
and Highlights of the  
Year**

5

**Partnering with You**

2

**Expectations and  
Routines**

1

**Form and Co-Form  
Teachers**

# Expectations and Routines



FUTURE-READY LEADERS WITH THE HEART FOR OTHERS

# School Curriculum Hours

Day	Monday	Tuesday	Wednesday	Thursday	Friday
Arrival	7.25 a.m.				
Dismissal	1.30 p.m. (for Primary 1 and 2) 1.40 p.m. (for Primary 3 to 6)				12.40 p.m.
After School Programme	<b>CCA</b>  Session 1 (2.15 - 4.15 p.m.) Session 2 (3.45 - 5.45 p.m.)	<b>Supplementary/ Remedial</b>  Slot 1 (2.15 - 3 p.m.) Slot 2 (3 - 3.45 p.m.)	N/A	<b>Supplementary/ Remedial</b>  Slot 1 (2.15 - 3 p.m.) Slot 2 (3 - 3.45 p.m.)  <b>CCA</b> (3.45 - 5.45 p.m.)	<b>HMTL</b>

# School Expectations and Routines



## Regular Attendance

- All absence from school must be accompanied by a medical certificate or parent letter.
- Students are encouraged **not** to plan overseas trips for family vacations during school terms.

## Punctuality

- Students will be considered as late if they report to school after 7.30 a.m.
- Students should report to school on time to participate in pre-assembly activities planned for them.

## Pre-Assembly Activities (7.20a.m. onwards)

- [Mon & Fri] Students will report to the School Hall.
- [Tues – Thurs] Students will report to the classrooms.
- Students should bring a story book (Mon to Wed – EL book, Thurs to Fri – MT book) for silent reading every day.

# A Few Reminders...

Prescribed uniform must worn to school at all times. This includes;

- School socks
- Black canvas shoes (all black)

Name tags on the school shirt should be positioned slightly above the school crest.



Carrying handphones and smart watches in school must be accompanied by an online request by the parent. (Link sent through PG). Cycling to school must be accompanied by a signed consent form.

No jewellery of any form and/or fancy watch are to be worn by students.

- For more details, please refer to the Student Handbook (Pg 7 to 14).



## Smartphone and/or Smartwatch Policy

To minimise distractions during school hours, students are **strongly discouraged** from bringing smartphones and/or smartwatches to school.



Students are **not allowed to use** smartphones or smartwatches during school hours, including recess, CCA sessions, and after-school programmes (e.g. remedial or enrichment lessons).



All devices must remain in your child's school bag until the end of school hours or after-school programmes. Student can take out the device to contact parents after passing the school guards' areas.

In case of misuse, the mobile phone may be confiscated and will only be returned in your presence. Please also note that the school is not responsible for any loss of smartphones and/or smartwatches. Should you need to contact your child for urgent matters, you may call the school's General Office at **+65 6538 3011**.



# Class Rules and Expectations

## Class Rules

- Raise your hand and wait for your turn if you wish to share your response or ask a question.
- Be kind, courteous and helpful.
- Be the best that we can be – *It is okay not to know; It is not okay not to try.*





# Class Rules and Expectations

## Expectations

- Students should bring the Student Handbook daily.
- Students should take responsibility for their learning.
- A safe, respectful and inclusive classroom environment is built by everyone.
- Homework given should be completed by the next day unless otherwise stated, aligning to our school's Homework Policy.



# Homework Policy @ PGPS

Scan to read in detail



# Rationale and Intent of Homework

- Meaningful and relevant homework assignment forms an integral part of students' learning process as **homework allows students to deepen their understanding and facilitates better retention of learning** through:
  - ✓ Practising skills acquired
  - ✓ Reinforcing concepts taught
  - ✓ Applying knowledge learnt
- Homework provides students with the opportunity to **learn beyond the classroom and nurtures greater self-discipline, time management and self-directedness in learning.**
- Allows teachers to **effectively identify students' learning gaps** so that appropriate intervention and support can be provided to enhance students' learning.
- Through homework submissions, **teachers can formatively assess students' learning progress and share timely feedback** with parents so that you can be more involved in your child's learning.

# Developing Self-Directed Learners

## Responsibilities of Students

Students should be self-directed and take ownership of their own learning by:

- **Exercising personal responsibility** in recording their daily assignments (including deadlines) in their Student Handbook.
- **Seeking clarifications** if they are unclear with any assignment task or instructions.
- **Taking pride** in completing their assignments, ensuring that they put in their best effort to produce quality work for submission.
- **Exercising self-discipline** in submitting all assignments (including corrections) on time.



PUNGGOLGREEN  
PRIMARY SCHOOL

# School-Home Partnership

## Parents' Role

With strong **School-Home Partnership**, parents can work closely with your child's form and subject teachers, to play an active role in **supporting your child's learning** through:

- **Checking your child's Student Handbook** and supervising them in their homework completion.
- **Providing a conducive environment at home** (i.e. having a quiet study area that is well-lit and free from distractions) for your child to revise and complete their assigned homework.
- **Establishing daily routines with your child** to work on their assigned homework for the day, while ensuring that there is ample rest and play time set aside for their well-being.
- **Guiding your child** when they face difficulties in completing their assignments and encouraging them to make an attempt to do the assignment even if they find them challenging.

# School's Focus and Key Outcomes





# Student Outcomes

## SELF-DIRECTED LEARNERS

- Have a lively curiosity about things
- Take responsibility for their own learning
- Take pride in their work
- Have healthy habits and an awareness of the arts

## CONFIDENT LEADERS

- Know their strengths and areas for growth
- Think for themselves
- Express themselves confidently
- Know right from wrong and choose to do what is right

## INNOVATIVE COLLABORATORS

- Are creative and inventive
- Exercise initiative
- Work effectively in teams
- Strive for excellence to achieve a common goal despite challenges

## CARING CITIZENS

- Know and love Singapore
- Empathize and share with others
- Care for others and the environment
- Take action to improve the lives of others

# S.T.R.I.V.E. Values



Self-Discipline

Integrity

Teamwork

Valour

Responsibility

Empathy

# S.T.R.I.V.E. Values

Values	Tagline	Desired Behaviour (I will...)
<b>Self-Discipline</b>	Choose to do what is right	<ul style="list-style-type: none"> <li>Set personal goals and work hard towards achieving them</li> <li>Think before I act and manage my own behavior</li> <li>Abide by the school rules</li> <li>Adopt healthy habits</li> </ul>
<b>Teamwork</b>	Work collaboratively with others to achieve a common goal	<ul style="list-style-type: none"> <li>Participate and contribute actively to the team</li> <li>Encourage and motivate others</li> <li>Listen and respect the opinions of others</li> <li>Work and play with peers regardless of background (race/religion/language etc)</li> </ul>
<b>Responsibility</b>	Take ownership of my own learning and my actions	<ul style="list-style-type: none"> <li>Remain curious and be self-motivated to learn</li> <li>Carry out work/duties given with diligence and complete them on time</li> <li>Take pride in producing good work</li> <li>Own up when I make mistakes and be willing to accept the consequences</li> </ul>
<b>Integrity</b>	Be honest even when no one is watching	<ul style="list-style-type: none"> <li>Be honest in words and deeds</li> <li>Lead by example</li> <li>Uphold the good name of the school</li> <li>Keep to my words and promises</li> </ul>
<b>Valour</b>	Show courage even in the face of challenges	<ul style="list-style-type: none"> <li>Show confidence in my own ability</li> <li>Embrace challenges</li> <li>Stand up for what is right</li> <li>Dare to try new learning experiences</li> </ul>
<b>Empathy</b>	Seek to understand and show care for others	<ul style="list-style-type: none"> <li>Be mindful of others' feelings</li> <li>Help others in need</li> <li>Show respect to teachers and be courteous to others</li> <li>Look after the class, school and the environment</li> </ul>

# Learning Dispositions

Learning Disposition	Description	Behavioural Descriptors
<b>Curiosity and Self-Directedness</b>	I am interested to learn and motivated to find out more.	<ul style="list-style-type: none"><li>• Stays focused during lesson</li><li>• Participates in class discussions</li></ul>
<b>Responsibility and Diligence</b>	I take ownership of my learning. I am driven to give my best.	<ul style="list-style-type: none"><li>• Submits assigned homework on time</li><li>• Puts in effort to submit quality work</li></ul>
<b>Perseverance and Resilience</b>	I am determined to keep going despite challenges. I am willing to pick myself up after setbacks.	<ul style="list-style-type: none"><li>• Embraces challenging tasks</li><li>• Shows willingness to try again despite setbacks</li></ul>
<b>Collaboration and Open-mindedness</b>	I am willing to work with others to achieve a shared goal. I consider the opinions of others.	<ul style="list-style-type: none"><li>• Contributes to group work</li></ul>

# Programmes and Highlights of the Year





# P4 Programmes to Develop Self-Directed Learners



**Book Buffs@PGPS**



**STEM Challenge**



**SC Joy of Learning Projects**



**Math Around Us**



# P4 Programmes to Develop Self-Directed Learners



**Interdisciplinary  
Project Work**



**DLTS in FTGP**



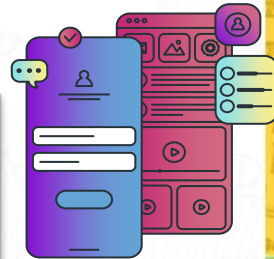
**ICT-Math Authentic  
Learning Tasks**



PUNGGOLGREEN  
PRIMARY SCHOOL

**FUTURE-READY LEADERS WITH THE HEART FOR OTHERS**

# P4 Programmes to Develop Self-Directed Learners



**Learning Journey to  
Kreta Ayer  
Heritage Gallery**



**Learning Journey to  
National Gallery  
Singapore**



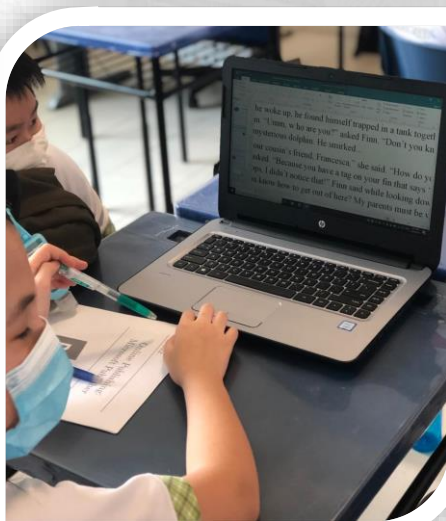
**FUTURE-READY LEADERS WITH THE HEART FOR OTHERS**



# P4 Programmes to Develop Self-Directed Learners



**MTL Voice 21  
Enrichment  
Programme**



**Creation of  
Digital Life Cycle  
Stories**



**Arts Fiesta**



# P4 Programmes to Develop **Confident Leaders**



## Leadership Opportunities:

**Class Committee**                      **CCA Leaders**  
**Student Leaders**    **Peer Support Leaders**    **PAM Ambassadors**  
**MTL Support Leaders**    **Green Leaders**  
**Math & Science E2K Programmes (NEW!)**    **EL Library Leaders**



**FUTURE-READY LEADERS WITH THE HEART FOR OTHERS**



# P4 Programmes to Develop **Confident Leaders**



**Math E2K Students at  
National Mathematical Olympiad of Singapore 2025  
& 18th Annual Mathlympics 2025**

**Science E2K Students in Action**

# P4 Programmes to Develop **Confident Leaders**



**Music Busking**



**PGPS' Got Talent!**



**Art & Music Enrichment Programme**



# P4 Programmes to Develop Innovative Collaborators



**P4 Camp**



**STRIVE 2 Thrive Week**

## P4 Programmes to Develop Innovative Collaborators



**EL Week**



**MTL Fortnight &  
MT Camp**

# P4 Programmes to Develop **Caring Citizens**



**MTL Experiential Learning**



## **Values in Action (VIA):**

- **School-wide VIA – SHINE@PGPS**
- **Level VIA – Make it Shine@PGPS, Upcycling @ PGPS**





# P4 Programmes to Develop **Caring Citizens**



## National Education

- Total Defence Day
- International Friendship Day
- Racial Harmony Day
- National Day



# P4 Programmes to Develop **Caring Citizens**

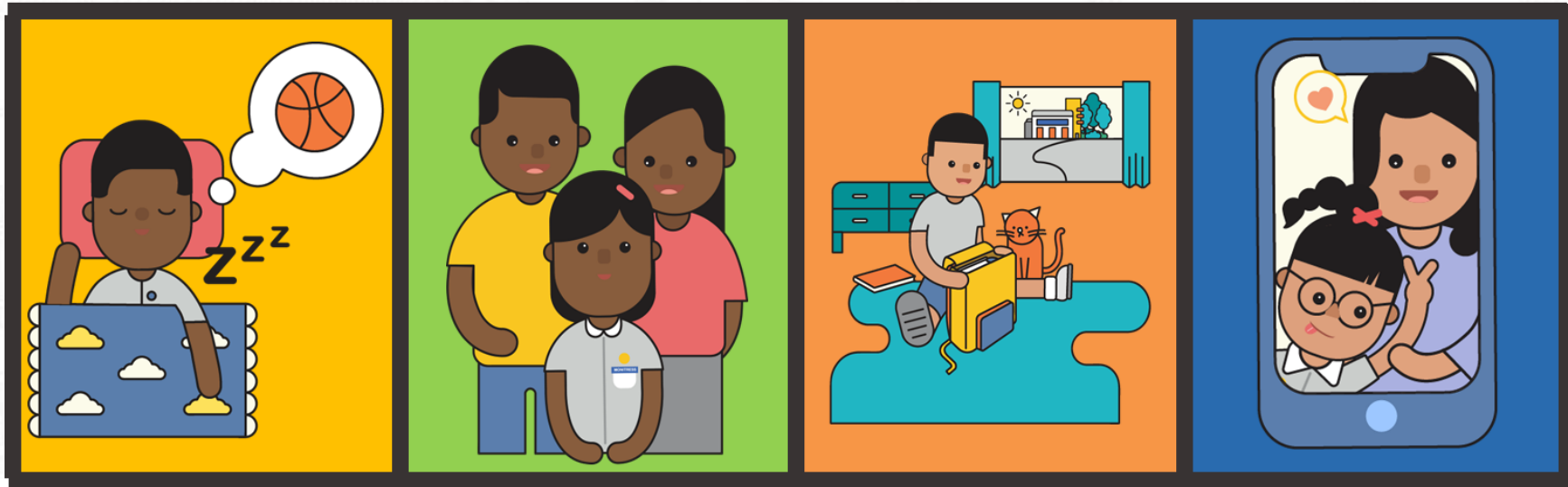


- To encourage the S.T.R.I.V.E. values, we recognise students through various character awards that celebrate not just academic achievement, but also the development of strong moral character and positive values.
- These awards include the Termly Class S.T.R.I.V.E. Award and Model Class Award.



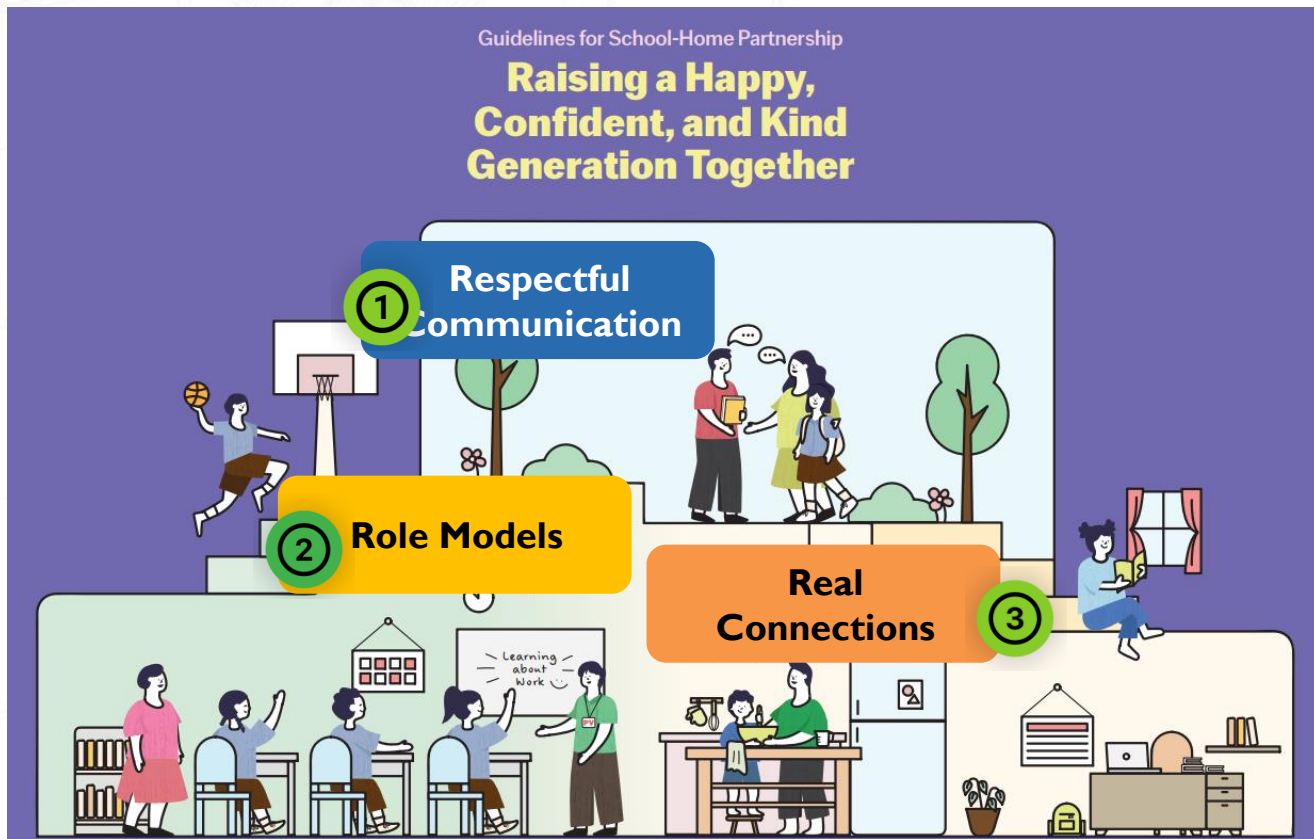
# Partnering With You





***Raising a Happy, Confident and Kind Generation Together***  
***Our children do best when schools and parents work hand in hand to support them.***

# 3 Ways to Build School-Home Partnership



**FUTURE-READY LEADERS WITH THE HEART FOR OTHERS**



# Respectful Communication



Understand each other's perspectives and concerns regarding each child.



Communicate kindly using official channels (*refer to list on the next slide*).



Communicate during working hours.  
*We may not be able to respond immediately, but we will respond as soon as we can.*



# Communication Channels

## Parent to School & School to Parent

### CLASSDOJO

One of the platforms for communication between subject teachers and parents.

For:

- Daily reminders
- Clarification of matters
- Sharing of updates of child

### STUDENT ORGANISER / EMAIL / PHONE CALL\*



**\*NOTE:** Teachers will use the school phone to share updates instead of personal mobile phones.

## School to Parent

### PUNGGOL GREEN PRIMARY SCHOOL'S WEBSITE

Website:

[punggolgreenpri.moe.edu.sg/](http://punggolgreenpri.moe.edu.sg/)

Phone Number: 65383011

For:

- Termly newsletters
- Consent forms
- Latest updates on school matters
- Travel declaration
- Reasons for Absence  
(Medical Certificate/Letters)

### PARENTS GATEWAY



# Being Role Models



Find joy in everyday experiences with our children.



Instill confidence by encouraging responsibility and believing in our children's abilities.



Model good values in words and actions.



# Building Real Connections



Establish good habits for our children to stay confident and in control of their technology use.



Build strong bonds through shared experiences and meaningful conversations.



Provide a balanced mix of engaging online and offline activities at home.





# Grow Well SG

Grow Well SG (GWSG) is a new national strategy introduced in 2025, led by MOH, MOE and MSF to help families create a healthier home environment in the digital age.

GWSG focuses on helping children **eat, sleep, learn and exercise well**, aiming to establish healthy habits early for a better future.

To support this, as part of their health plan, students will be given personalised lifestyle prescriptions, based on the Child Lifestyle Questionnaire done during the Annual Health Screening.



# Grow Well SG

PGPS will continue to advocate healthy habits through our PE lessons and programmes. Here are some useful resources available on HealthHub for parents, specifically on Grow Well SG.



**FUTURE-READY LEADERS WITH THE HEART FOR OTHERS**

# Parents, You Are Our Key Partners

- Together, we can create a positive and supportive environment for our children to thrive both in and out of school.
- Let us lead by example and communicate with kindness, and build strong school-home partnerships for our children.

It takes a village to raise a child.



# General Tips for Parents

- Encourage your child to express themselves freely and be curious.
- Affirm your child's strengths, interests and efforts.
- Check your child's activity books and files regularly.
- Make sure assignments are carefully completed and concepts are understood.
- Encourage your child to pack their bag on their own.





# We Seek Your Support...

## Student Handbook

- Ensure that your **Personal Particulars (Pg 1)** are filled in correctly.
- Read through the **updated School Rules** and **acknowledge** by signing Pg 14.
- **Set personal goals together** with your child on Pg 20 (*This will be a work in progress, and it would be beneficial to revisit this with your child from time to time*).

**Personal Particulars**

Name: \_\_\_\_\_  
Index No: \_\_\_\_\_ Class: \_\_\_\_\_  
Blood Group: \_\_\_\_\_ Medical Condition: / All \_\_\_\_\_  
School Bus No: \_\_\_\_\_ School Bus Operator: \_\_\_\_\_  
Food Restrictions: Vegetarian / No A \_\_\_\_\_

**In Case of Emergency**  
Name of Parent(s) / Guardian(s) / Caregiver(s) \_\_\_\_\_  
Relationship: \_\_\_\_\_ (Mother) \_\_\_\_\_  
Telephone: \_\_\_\_\_ (Mobile) \_\_\_\_\_

Name of Parent(s) / Guardian(s) / Caregiver(s) \_\_\_\_\_  
Relationship: \_\_\_\_\_ (Mother) \_\_\_\_\_  
Telephone: \_\_\_\_\_ (Mobile) \_\_\_\_\_

My Form Teachers are \_\_\_\_\_ and \_\_\_\_\_

**My Subject Teachers are...**

English	Mathematics
Mother Tongue	Science
Character and Citizenship Ed	Physical Education
Art & Craft	Music
Social Studies	

**Serious Offences**

The following are considered to be serious offences and may lead to a student being punished in the form of the consequences stated on the previous section under School Rules or in the form of writing (see below only) written suspension from school.

Offence	Consequences
Leaving school grounds without permission	Trance
Unauthorised Offences	
Truancy	Open detention / detention in school staff
Using vulgarities	Bullying (physical, verbal or cyberbullying)
Disruptive behaviour	Chewing in classrooms / halls / surroundings
Unauthorized access to internet accounts	
Other Serious Offences	
Assault	Writing / Detention
Fighting	Paraphrase
Smoking	Detention abuse
Carrying	Prohibition of weapons
Violence	

The school believes that making great self discipline is part of the school's responsibility in providing the students with a safe and secure environment.

**My Goals**

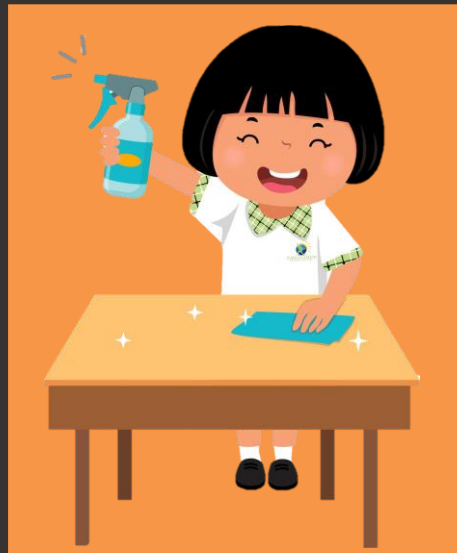
I STRIVE to achieve...

Subject	Term 1	Term 2	Term 3	Term 4
English	Target Actual	Target Actual	Target Actual	Target Actual
Mathematics				
Mother Tongue				
Science				

My other goals (non-uniformed):

To achieve my goals and targets, I will...

20



***Thank you for attending today's session.  
Please share with us any questions you  
may have.***



**FUTURE-READY LEADERS WITH THE HEART FOR OTHERS**