
Parent-Teacher Meeting 1

26 January 2024



Agenda



School's Focus, Key Outcomes & Programmes



2. Our School's Approach to Student Outcomes

PGPS STUDENT OUTCOMES

SELF-DIRECTED LEARNERS

- Have a lively curiosity about things
- Take responsibility for their own learning
- Take pride in their work
- Have healthy habits and an awareness of the arts

CONFIDENT LEADERS

- Know their strengths and areas for growth
- Think for themselves
- Express themselves confidently
- Know right from wrong and choose to do what is right

INNOVATIVE COLLABORATORS

- Are creative and inventive
- Exercise initiative
- Work effectively in teams
- Strive for excellence to achieve a common goal despite challenges

CARING CITIZENS

- Know and love Singapore
- Empathize and share with others
- Care for others and the environment
- Take action to improve the lives of others

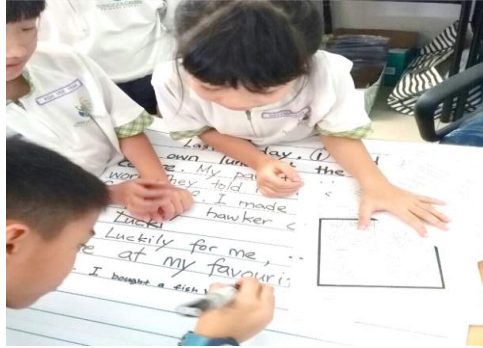
Learning Dispositions

Learning Disposition	Description	Behavioural Descriptors
Curiosity and Self-Directedness	I am interested to learn and motivated to find out more.	<ul style="list-style-type: none">• Stay focused during lesson• Participate in class discussions
Responsibility and Diligence	I take ownership of my learning. I am driven to give my best.	<ul style="list-style-type: none">• Submit assigned homework on time• Put in effort to submit quality work
Perseverance and Resilience	I am determined to keep going despite challenges. I am willing to pick myself up after setbacks.	<ul style="list-style-type: none">• Embrace challenging tasks• Show willingness to try again despite setbacks
Collaboration and Open-mindedness	I am willing to work with others to achieve a shared goal. I consider the opinions of others.	<ul style="list-style-type: none">• Contribute to group work

P2 Programmes to grow Self-Directed Learners



**EL Library
Programme**



**STELLAR
Modified
Language
Experience
Approach**



**MTL Oral Interactive
Tasks**

P2 Programmes to grow Self-Directed Learners



ICT Baseline Skills



**PowerPoint, Email and
Student Learning Space!**

P2 Programmes to grow Self-Directed Learners



**3 Habits of Mother
Tongue Language
Learners**



Arts Fiesta



**Math-nificent Week
& Little Math Genius**

P2 Programmes to grow Confident Leaders



Leadership Opportunities

- Classroom Committee members

P2 Programmes to grow Confident Leaders



EL Week



**Making My School
Values Visible in
MTL**

P2 Programmes to grow Confident Leaders



**Music Appreciation
Day**



PGPS Got Talent



Music Busking



Art Competition

P2 Programmes to grow Innovative Collaborators



**MTL Reading
Programme**



4 Domains of PAL
(Visual Arts, Performing Arts,
Sports & Games, Outdoor
Education)



EL Week

P2 Programmes to grow Caring Citizens



National Education

- Total Defence Day
- International Friendship Day
- Racial Harmony Day
- National Day

P2 Programmes to grow Caring Citizens



Green Week

Values in Action (VIA)

- School Wide VIA - SHINE@PGPS
- Level Specific VIA - Managing Myself & Responsible Pet Ownership

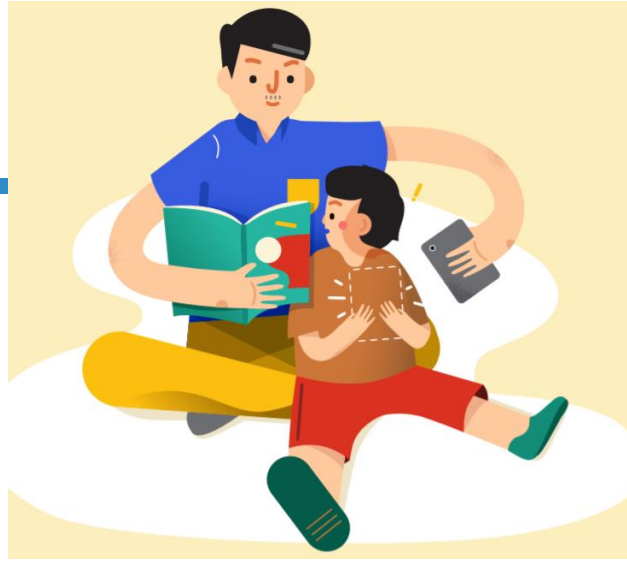


Red Packet Recycling Initiative



MTL Experiential Learning

3. Partnership with Parents



So, how can you join us in engaging the mind,
nurturing the heart and
empowering the hands of your child?

Parent Partnership Tips for EL



- Cultivate the love for reading. Take your child to the library.
- Role model for your child in spoken and written English all the time.
- Help your child discover the love for learning the language

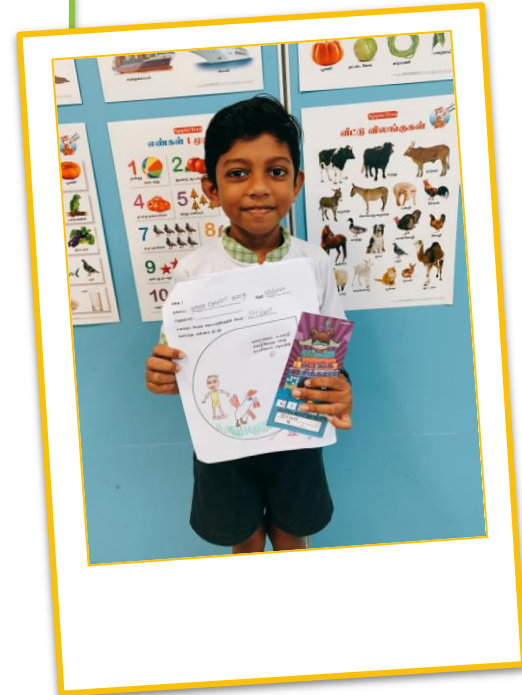
Parent Partnership Tips for Math

- Have your child talk about Math and explain Math concepts to you- Making Thinking Visible and Audible
- Promote a positive attitude towards Math - Develop a Growth Mindset.
- Be your child's cheerleader. Affirm when he/she achieves success. Encourage him/her to persevere on when facing challenging problems.
- Communicate with your child's teacher.



Parent Partnership Tips for MTL

- Reinforce good learning habits
- Role-model MTL (Converse with your child and Learn with your child)
- Encourage your child to keep a “MTL Vocabulary Bank”
- Join the MTL storytelling sessions at community libraries



Parent Partnership Tips for PE, Art & Music (PAM)



- **Encourage** your child to express himself / herself freely.
- **Affirm** your child's interests and efforts.
- **Engage** in a discussion with your child about things they have done, learnt or created in PAM lessons.



**Homework
Policy
@PGPS**

A. Rationale and Intents of Homework

- Meaningful and relevant homework assignment forms an integral part of students' learning process as homework allows students to deepen their understanding and facilitates better retention of learning through:
 - ✓ Practising skills acquired
 - ✓ Reinforcing concepts taught
 - ✓ Applying knowledge learnt
- Homework provides students with the opportunity to learn beyond the classroom and nurtures greater self-discipline, time management and self-directedness in learning.
- Allows teachers to effectively identify students' learning gaps so that appropriate intervention and support can be provided to enhance students' learning.
- Through homework submissions, teachers can formatively assess students' learning progress and share timely feedback with parents so that they can be more involved in their child's learning.

B. Guiding Principles on Homework Assignment

Homework Management - In consideration for the students' well-being, the school refrains from giving homework for the following groups of students on these occasions:

- a) P1 Students in Term One
 - To allow P1 students to have a smoother transition into their primary school life
- b) P3-6 Students on Mondays (CCA Day)
 - To allow students ample rest time after attending CCA sessions
- c) P3-5 Students on scheduled Weighted Assessment (WA) Days
 - To give students time and space to do self-revision.
- d) All Students During Festive or Celebratory Holidays (e.g., CNY, Deepavali, Hari Raya, National Day & Children's Day)
 - To ensure that students can spend quality time and enjoy the celebrations with their families and loved ones

NOTE: *If homework is given on days indicated in b) to d), more time would be given for students to complete their assigned task/s.*

C. Developing Self-Directed Learners

Responsibilities of Students

Students should be self-directed and take ownership of their own learning by:

- Exercising personal responsibility in recording their daily assignments (including deadlines) in their Student Handbook
- Seeking clarifications if they are unclear with any assignment task or instructions
- Taking pride in completing their assignments, ensuring that they put in their best effort to produce quality work for submission
- Exercising self-discipline in submitting all assignments (including corrections) on time

D. School-Home Partnership

Parents' Role

With strong School-Home Partnership, parents can work closely with their child's form and subject teachers, to play an active role in supporting their child's learning through:

- Checking their child's Student Handbook and supervising them in their homework completion
- Providing a conducive environment at home (i.e., having a quiet study area that is well lit and free from distractions) for their child to revise and complete their assigned homework
- Establishing daily routines for their child to work on their assigned homework for the day, while ensuring that there is ample rest and play time set aside for their well-being
- Guiding their child when he/she faces difficulties in completing their assignments and encouraging their child to make an attempt to do the assignment even if he/she finds them challenging

Values	Tagline	Desired Behaviour I will...
Self-Discipline	Choose to do what is right	<ul style="list-style-type: none"> Set personal goals and work hard towards achieving them think before I act and manage my own behavior Abide by the school rules Adopt healthy habits
Teamwork	Work collaboratively with others to achieve a common goal	<ul style="list-style-type: none"> Participate and contribute actively to the team Encourage and motivate others Listen and respect the opinions of others Work and play with peers regardless of background (race/religion/language etc)
Responsibility	Take ownership of my own learning and my actions	<ul style="list-style-type: none"> Remain curious and be self-motivated to learn Carry out work/duties given with diligence and complete them on time Take pride in producing good work Own up when I make mistakes and be willing to accept the consequences
Integrity	Be honest even when no one is watching	<ul style="list-style-type: none"> Be honest in words and deeds Lead by example Uphold the good name of the school Keep to my words and promises
Valour	Show courage even in the face of challenges	<ul style="list-style-type: none"> Show confidence in my own ability Embrace challenges Stand up for what is right Dare to try new learning experiences
Empathy	Seek to understand and show care for others	<ul style="list-style-type: none"> Be mindful of others' feelings Help others in need Show respect to teachers and be courteous to others Look after the class, school and the environment

Form Teacher Matters



4. Expectations and routines (School)

Day	Monday	Tuesday	Wednesday	Thursday	Friday
Arrival	7.30 a.m.				
Dismissal	1.30 p.m. (for Primary 1 and 2) 1.40 p.m. (for Primary 3 to 6)				12.40 p.m.
After School Programme	CCA Session 1 (2.15 - 4.15 p.m.) Session 2 (3.45 - 5.45 p.m.)	Supplementary/Remedial Slot 1 (2.15 - 3 p.m.) Slot 2 (3 - 3.45 p.m.)	Staff meeting	Supplementary/Remedial Slot 1 (2.15 - 3 p.m.) Slot 2 (3 - 3.45 p.m.) CCA (3.45 - 5.45 p.m.)	HMTL Staff development and learning

4. Expectations and routines (School)

Absenteeism:

All absence from school must be accompanied by a medical certificate or parent letter.

Students are not supposed to go overseas for holiday during school terms.

Pre-Assembly

7.20 a.m. onwards

Mon & Fri - Report to the Hall

Tues to Thurs - Report to the Classrooms

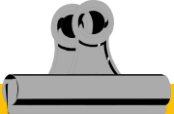
Students are to bring a storybook for silent reading every day.

Late coming:

Students will be considered as late if he/she reports to school after 7.30 a.m.

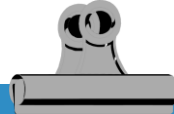
Students are to report to school on time as they will be able to engage in pre-assembly activities.

4. Expectations and routines (School)

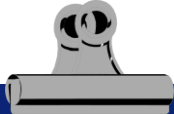


Prescribed uniform must worn to school at all times. This includes;

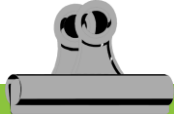
- School socks
- Black canvas shoes (all black)



Name tags on the school shirt should be positioned slightly above the school crest.



Carrying handphones to school as well as cycling to school, should be accompanied by the submission of a signed consent from parents.



No jewellery of any form or fancy watch is to be worn by students.

- For more details and picture reference, you can refer to the student's daily organiser. (Pg 7 to 12)

4. Expectations and routines (School)

Class rules

Show kindness in our:

- Words
- Actions
- Thoughts

My expectations

Demonstrate the school values daily

- Self-discipline
- Teamwork
- Integrity
- Valour
- Empathy

Daily practices

- Do revision and finish homework on a timely basis.
- Practise good study habits by planning our time wisely.
- Adopt a growth mindset to learning.
- Understand oneself and come up with solutions to close gaps.

Keeping our teens safe online

15 APR 2021



Source: <https://www.schoolbag.edu.sg/story/keeping-our-teens-safe-online>

Managing risks online

- Talk to your child about hand phone usage and agree on some rules to guide them on screen time during school days.
- Be aware of who they are talking to or websites they are surfing. Advise them to be wary of not disclosing personal information and why.
- If your child is into gaming, do discuss with them to gradually reduce their gaming time from holidays to term time. Get them to understand the consequences if they allow gaming to take over their time.

Modes of Communication

School to Parent & Parent to School

CLASSDOJO

Will serve as the primary platform for communication between subject teachers and parents.



For:

- Daily reminders
- Clarification of matters with teachers.

STUDENT ORGANISER / EMAIL



School to Parent

PUNGGOL GREEN PRIMARY SCHOOL WEBSITE

Website:

punggolgreenpri.moe.edu.sg/

Phone Number: 65383011



For:

- Termly newsletters
- Consent Forms
- Latest updates on School Matters
- Travel Declaration

PARENTS GATEWAY

Organiser reminders

- ▶ Ensure that the “Personal Particulars” page (Pg 1) is filled in correctly.
- ▶ Read through the updated School rules and acknowledge by signing Pg 13 of the student organiser.
- ▶ Help your child to set personal goals on Pg 19. (This page will be a work in progress and it would be good to revisit this page with your child/ward from time to time.)



Q & A

Parents' Feedback Survey



Kindly scan the QR Code and complete the Parents' Feedback Survey.

This will help us plan for our future events better.

Thank you!

*Thank
you*



S.T.R.I.V.E